

RANGE SAFETY RADAR

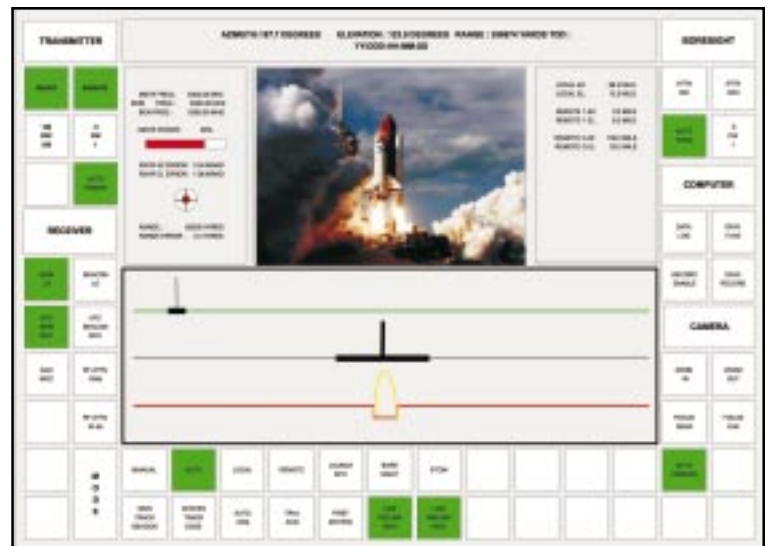


The RSR 980 Range Safety Radar is an autonomous, state-of-the-art system that acquires, automatically tracks in Skin and Beacon modes, and provides accurate Time-Space-Position-Information (TSPI) on the target of interest. The system acquires targets utilizing automatic or manual acquisition, computer designated trajectory acquisition, optical director or externally supplied remote designate data. The system provides real time data recording to disk of variables such as AZ, EL, RNG, time tag and range errors, etc.

A high-resolution color touch screen incorporates digitized video techniques for control and monitoring of the radar subsystems. The RSR 980 is designed for one man operation. Although fully computer-based, the RSR 980 is designed so that the embedded host computer system and software is effectively "transparent" to the radar operator. Interaction between the operator and the computer occurs automatically through the use of dedicated console operator touch screen or analog controls and does not require access through a keyboard terminal during the mission.

The Mission Display includes:

- Range Monitor
- Touch Screen controls for system operation
- Transmitter and Receiver displays
- Video of the radar target as well as TV video



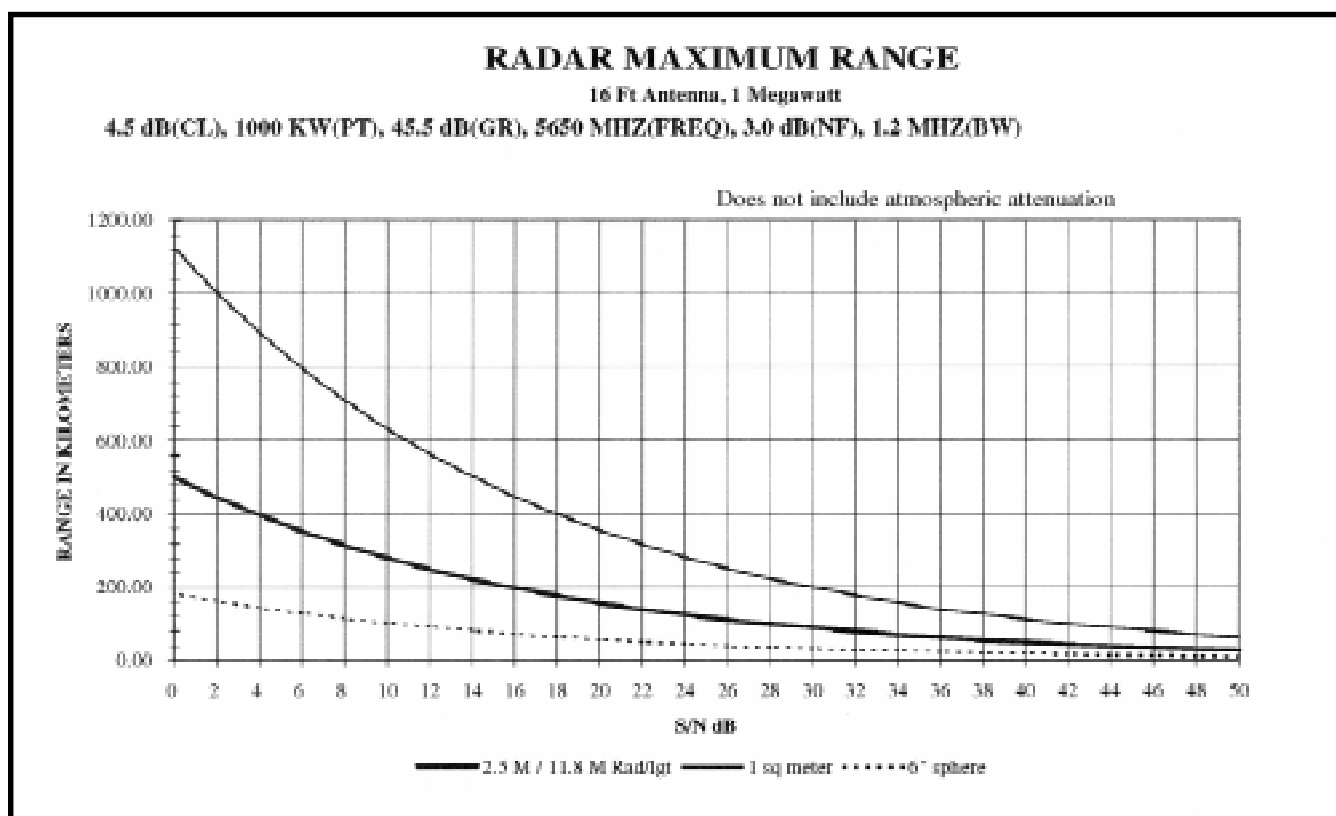
Mission Display Touch Screen

BAE SYSTEMS

- THE RSR 980 IS AN AUTONOMOUS SYSTEM DESIGNED TO AUTOMATICALLY TRACK LAUNCH VEHICLES AND PROVIDE ACCURATE POSITION DATA.
- THE RSR 980 IS A VME COMPUTER-BASED RADAR SYSTEM THAT PROVIDES EASE OF OPERATION, FUTURE FLEXIBILITY, REAL-TIME CALIBRATION, AND IMMEDIATE EVALUATION OF RADAR PERFORMANCE
- ONE-MAN OPERATION
- OPTIONAL COLOR GRAPHICS SYSTEM THAT DISPLAYS THE TARGET TRACK IN REAL-TIME SUPERIMPOSED OVER A CUSTOM BACKGROUND. THE BACKGROUND CAN DISPLAY PREDICTED TRACK, ACTUAL TRACK, SAFETY FOOTPRINT FOR THE LAUNCH VEHICLE AND EXPENDABLE STAGES PREDICTED SPLASH-DOWN AREAS. THIS DATA IS VITAL TO THE LAUNCH SAFETY OFFICER IN MAKING A CONTINUE/TERMINATE DECISION.

OVERALL SYSTEM CHARACTERISTICS

Type	C-Band, RSR 980
Frequency	5.4 to 5.9 GHz
Angle Accuracy	0.5 mil rms with 12 dB SNR excluding glint, scintillation, multi-path
Range Accuracy	±100 Meters
Tracking Range	400 to 65,536,000 yards
Data Precision	16-bit
Digital Data Input/Output Remote	Serial RS-422 in customer specified format
Operating Modes	RF (skin, beacon, mixed)
Calibration Equipment:	Remote-controlled Boresight System
Input Voltage	120/208 VAC ±6% of nominal, 3-phase, 4-wire-grounded neutral, 60 Hz ±1%



The specific requirement will be evaluated to determine antenna size and transmitter output power to meet tracking requirements.

For more information, please contact Business Development
Technical Services 557 Mary Esther Cutoff Fort Walton Beach, FL 32548-4090
Telephone (850) 244-7752 Fax (850) 244-7782

BAE SYSTEMS