

# COLOR GRAPHICS SYSTEM

The Color Graphics system provides the following capabilities:

- Background mapping indicating coastal boundaries and land masses, etc.
- Display target X-Y vector plots superimposed on background maps.
- Alphanumeric data including target position, scale factoring information, time and data source (designate input data).
- Real-time target plotting of X versus Y and height versus horizontal range, concurrently.
- Up to ten reference points with bearing and target to reference distance.
- Display up to three tracking system variables plotted against time or a fourth variable.
- Real-time plotting of up to any three tracking system floating point variables versus time.
- Real-time plotting of up to any three tracking system floating point variables versus a fourth variable.
- Playback of tracking system data in formats identical to the real-time plot.
- Playback plotting of up to any three tracking system variables versus time.
- Playback plotting of the first difference of up to any three tracking system variables versus time.
- Playback plotting of the second difference of up to any three tracking system variables versus time.
- Disk storage and recall of any plot.

**BAE SYSTEMS**



BAE SYSTEMS' state-of-the-art, high-performance Color Graphics workstation may be integrated with existing radar or other tracking systems to provide real-time visualization of target or tracking system performance data. The Color Graphics workstation displays and prints target and tracking system data such as target position, velocity, altitude and operator selectable system variables during real-time mission performance. It may also be used for post-mission analysis of recorded mission data. Visual data may be used to aid the operator, maintenance technician and system analyst in early target acquisition/reacquisition, analysis of target performance, analysis of tracking system performance and diagnosis of system anomalies.

The Color Graphics workstation architecture is centered around the Silicon Graphics (SGI) O2 visual workstation which is powered by a 64-bit MIPS RISC processor and includes 128 Kb of memory, a 4 Gb harddrive, 21-inch monitor and backup tape subsystem. The 21-inch graphic display, with 19.8-inch viewable image size, utilizes enhanced elliptical correction systems technology to optimize image performance. Also included with the Color Graphics workstation is a state-of-the-art HP 4500 Color Laser Jet printer to provide high fidelity hardcopy of on-screen graphs and plots. For map importation, U.S. users may download Defense Mapping Agency topographical maps. All users may utilize the Wacom Digital Graphing tablet to produce custom maps.

The Color Graphics workstation user interface has been ergonomically designed within a standard windows system implementation. The operator may enter required data and make required program actions through the use of standard windows components, such as pull down menus, dialog boxes, scroll bars and buttons utilizing the keyboard or mouse.

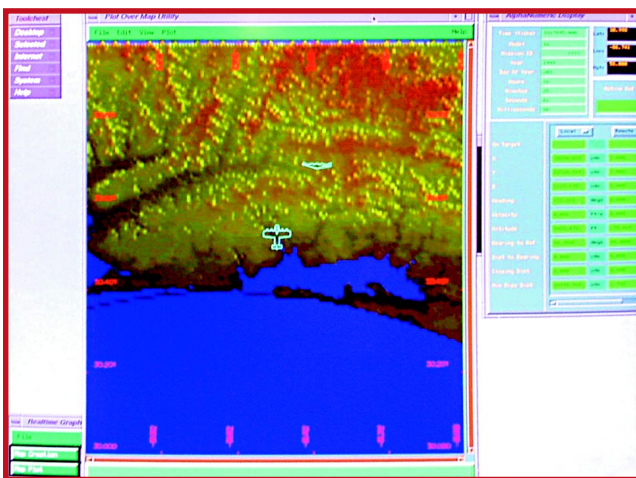
The Color Graphics workstation can be integrated into existing tracking systems using either standard RS-232 serial communications or ethernet technology. This flexible and adaptable approach to host system interface permits easy and efficient integration of the Color Graphics workstation to existing range systems.

## Features Included

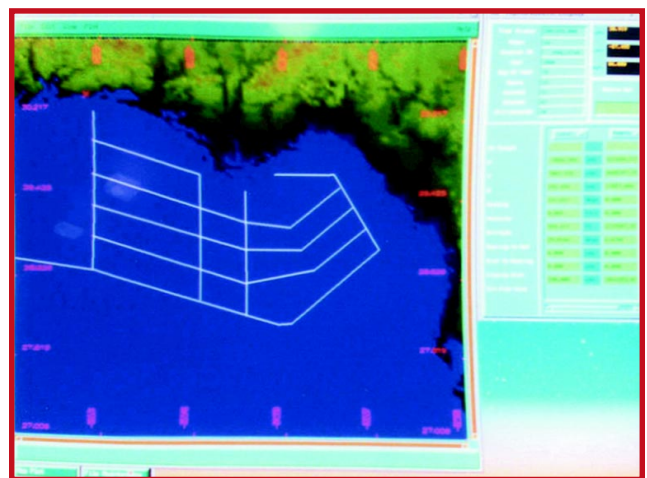
Plots Alphanumeric Displays Scales and Units Color Grid Markers Lines and Text Pan and Zoom Origin Coordinates Printing Files Map Creation	Drawing and Tracing Real-Time Plot Playback Plot Alphanumeric Display <ul style="list-style-type: none"> <li>• Mission ID</li> <li>• Day of Year</li> <li>• Year</li> <li>• Time</li> </ul> Plot First and Second Differences Point Sample Plot Trace Tick Time	Reference Points Bearing Lines Tick Marks Flight Corridors Range Rings Hooking Perspective Views Site Perspective Reference Point Perspective Target Source Perspective Set Eye Perspective Auto Zoom/Pan File Maintenance Help
--	---	--

**Display:** 20 inch diagonal, rack-mounted, RGB color monitor, 50Hz non-interlaced, 1280x1024 displayable matrix  
**Printer:** High-speed, eight-color.  
**Graphics Tablet:** 11 inch x 11 inch Digitizing Tablet  
**Plot Parameters:** The system plots any floating-point variables that reside in the radar computer memory.  
**Reference Location:** The displays are referenced to any geodetic location on the earth surface.  
**Differentiation:** Selectable color differentiation distinguishes one track from another.  
**Scales:** System can display data in all applicable metric, empirical engineering units, and scale factors.  
**Map Display:** Displays and stores maps consisting of an array of 1201 x 1201 floating point elevations.

**X/Y Plot Over Map**



**X/Y Plot over Map with History**



For more information, please contact Business Development  
 Technical Services 557 Mary Esther Cutoff Fort Walton Beach, FL 32548-4090  
 Telephone (850) 244-7752 Fax (850) 244-7782